



Highfield Primary School

Week Ending 12th June 2026

Attendance and Punctuality

Each week we celebrate the two classes with the best attendance for that week - One from EYFS/KS1 and one from KS2.

CONGRATULATIONS to RB, 1B, 1BD and 2S (with 98%) and to 3J (with 99%) for their great attendance this week. These classes will receive our 'Attendance Bears' to look after for the week.

Well done to the following classes for their excellent punctuality (least amount of lates). CONGRATULATIONS to 2L with only 1 late this week and to 4C and 5A with 0 lates this week. These classes will receive our 'Early Birds' to look after for the week.

Year 3 Ancient Greece Workshops

These will be taking place in the hall for each class on Monday 15th.

Year 1 Capel Manor Trip

This will take place on Thursday 18th June. Please wear school uniform and dress appropriately for the weather eg raincoat/wellies, sun hat/sun cream. Please ensure your child has a healthy packed lunch (no nuts or fizzy drinks) including a bottle of water, in a plastic bag. Alternatively you can order your child's packed lunch through The Pantry, however you must still provide a water bottle. Please remember to sign up and pay for the trip if you wish your child to attend.

Reading Breakfasts

These will take place for our Reception and Year 1 families on Tuesday and for Years 2 and 3 families on Thursday. Please come along to the main Reception at 8:25, to enjoy a book and a breakfast snack with your child in the hall before school starts.

Highfield's Got Talent

The next round of auditions will be judged by the School Council with the finalists sharing their talents with KS2 on Friday - well done for getting this far and good luck to all the entrants!

Junk Orchestra

Our Nursery, Reception, Berry and Dali classes are very excited about the Junk Orchestra concerts and workshops taking place on Wednesday 17th June.

Borough Athletics

This will take place on Thursday 18th June for the selected children. Please remember to bring water bottles, hat/wear sunscreen and PE kit.

Looking ahead - STEM Week

We will be celebrating STEM week at the end of June. Our theme this year is 'What is your box?' Class Teachers would be very grateful for donations of boxes, egg cartons, pipe cleaners, clean milk bottles and yoghurt pots, goggle eyes etc. Please also have a go at creating with your own box at home (see the poster below for ideas).

Have a lovely weekend,

Mrs Morton and Mrs Calder



STEM WEEK

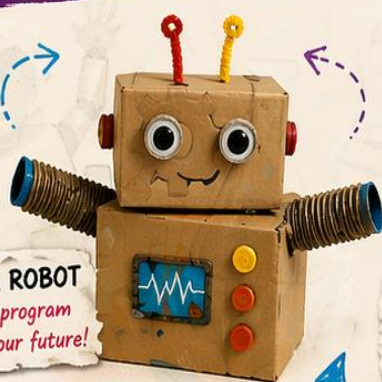
WHAT IS YOUR BOX?

THINK OUTSIDE (AND INSIDE!) THE BOX.
BUILD. DESIGN. CREATE. IMAGINE!

ONE BOX.
ENDLESS
POSSIBILITIES.



A BOAT
sail away on
new ideas!



A ROBOT
program
your future!



A HOUSE
design your
dream space!



A CAR
drive your
ideas
forward!



A CAMERA
capture
every
moment!



A ROCKET
reach for
the stars!



A CASTLE
build your
own world!



A MONSTER
let your
creativity
run wild!



AN ORGANISER
tidy today,
achieve
tomorrow!

SEE IT. BUILD IT. SHARE IT. BE PROUD OF IT!
SCIENCE. TECHNOLOGY. ENGINEERING. MATHEMATICS.



Highfield Primary School

JOIN FRIENDS OF HIGHFIELD FOR OUR

Summer Fete

HIGHFIELD PRIMARY SCHOOL
SATURDAY 4TH JULY 12 - 4 PM



ADULTS £2
CHILDREN
FREE

FUN FOR THE WHOLE FAMILY!

Sponsored by & friends of

Havilands

- * INFLATABLES * PONY RIDES *
FACE PAINTING * GAMES
- * WILD FANGS EXOTIC ANIMALS *
BBQ * PIZZA * ICE CREAM
- * INTERNATIONAL FOOD *
WAFFLES * BAR * DJ * MUSIC
- * RAFFLE *

AND MUCH MUCH MORE!

FRIENDS OF HIGHFIELD, HIGHFIELD PRIMARY N21 3HE
FETE TICKETS AT DOOR, RAFFLE TICKETS ON CLASSLIST
FRIENDSOFHIGHFIELDN21@GMAIL.COM



Highfield Primary School Summer 2025/26 Key Dates for Parents/Carers



1st June	<p>w/c 1st June to Friday 12 June– Year 4 Multiplication Tables Check (2 weeks)</p> <p>w/c 1st June - Highfield's Got Talent Auditions in class</p> <p><i>Sports day RESERVE DATES:</i> <i>Monday 1st June EYFS/KS1/Dali/Berry (9:30-11:00)</i> <i>Tuesday 2nd June Y3/4– (9:30-11:30)</i> <i>Friday 5th June 5/6 (9:30-11:00)</i></p> <p>Tuesday 2nd June - 6P London Zoo Trip</p> <p>Tuesday 16th - Reception and Year 1 Reading Breakfast</p> <p>Wednesday 3rd June - Class Photos and Year 6 individual photos</p> <p>Thursday 4th June - Berry Class trip to the London Eye</p> <p>Thursday 18th - Year 2 and Year 3 Reading Breakfast</p> <p>Friday 5th June - World Environment Day</p>
8 th June	<p>Year 6 Residential/Activity Week</p> <p>New Reception Induction Meetings (10th, 11th, 12th June 9:10-9:45)</p> <p>w/c 8th June – Year 1 Phonics Screening Check Week/Year 2 Resits</p> <p>w/c 8th June – Year 4 Multiplication Tables Check (week 2)</p>
15th June	<p>Monday 15th - Year 3 Ancient Greek Workshops</p> <p>Week 15th June - Highfield's Got Talent auditions to School Council & show</p>
22nd June	<p>Monday 22nd - Year 2 Hertfordshire Zoo Trip</p> <p>Nursery Induction Meeting- Thursday 25th June</p> <p>Friday 26th June – Newsletter to Parents</p>
29th June	<p>Year 6 Enfield Secondary School Transition Day</p> <p>STEM week</p> <p>Saturday 4th July - School Fete</p>
6 th July	<p>Monday 6th July – Reports to Parents</p> <p>Monday 6th July - Science Workshops (Y3 Rocks, Y4 Hazards, Y6 The Arctic)</p>



Highfield Primary School

	<p>Year 6 Production Week: Tuesday 7th July - Early performance (for School) and Evening Thursday 9th July - Evening Performance Friday 10th July - International Day</p>
13 th July	<p>w/c 6th and 13th July - Home visits for Reception Sept 26 Children Tuesday 14th - Year 6 Leavers Party 2:30-4:00pm Thursday 16th July – Newsletter to Parents Friday 17th July – End of Term. School finishes at 1:30. Year 6 Leavers Parade 1:00p.m.</p>
20th July	<p>Monday 20th July – INSET Day No School for Children Summer Holiday</p>

Children return to school Friday 4th September