

WELCOME TO OUR RECEPTION YEAR AT HIGHFIELD PRIMARY SCHOOL

June 2022



STAFF AT HIGHFIELD PRIMARY

- ▶ **Headteacher- Mr Wilson**



- ▶ **Deputy Headteacher – Mrs Calder**



- ▶ **Assistant Headteacher for Early Years – Mrs Halil-Docherty**



HIGHFIELD PRIMARY SCHOOL

- We are a 3 form entry school with a purpose built Nursery, which is part of our Early Years Foundation Stage department.



THE RECEPTION TEAM

Class RJ

▶ Miss Johnson– Class Teacher



▶ Miss Tailor- Nursery Nurse



THE RECEPTION TEAM

Class RL

▶ Miss Leedham– Class Teacher



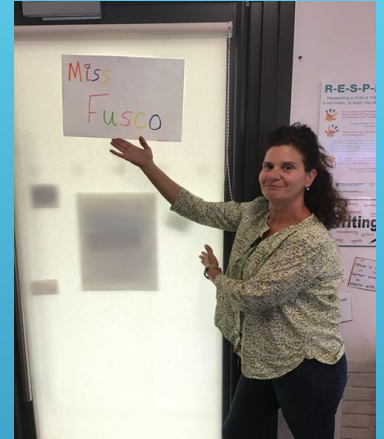
▶ Mrs Xhakaj- Nursery Nurse



THE RECEPTION TEAM

Class RF

▶ Ms Fusco— Class Teacher



▶ Ms Barnett- Nursery Nurse



WHAT TO EXPECT IN SEPTEMBER



Reception admission timetable 2022-2023

We know that many of you will need to take time off work or make alternative childcare arrangements, whilst your child settles into school.

We hope this timetable gives you an idea of what we hope our September transition will look like for Reception children.

A separate letter will be out to explain your child's plan.

	Mon	Tue	Wed	Thurs	Fri
29.8.22	Summer holidays	Summer holidays	Summer holidays	School Inset Day 1 st September	School Inset Day 2 nd September
5.9.22	Home visiting New to Highfield Children	Home visiting New to Highfield Children	Home visiting New to Highfield Children	Stay and Play Taster session for 45 mins	Stay and Play Taster session for 45 mins
12.9.22	Half day sessions	Half day sessions	Half day sessions with lunch	Half day sessions with lunch	Half day sessions with lunch
	The children have either a morning or afternoon session				
19.9.22	Children are in school for the whole day if ready				

WHAT TO EXPECT IN SEPTEMBER

If a child finds it difficult to settle they will continue to attend on a part-time basis, until staff feel they are ready to attend for a longer day. This will be reviewed on a weekly basis.



**We want the best start possible
for each child! Please work with us!**



Our Canteen

Order your child's lunch through HCL

**We have an allocated
playleader for each class
during lunchtimes**



Our amazing Reception Classrooms





Our amazing outdoors



IMPORTANT: Please do not allow your children to use the equipment before or after school.

- Your child will then place all items (coat/bookbag/change of clothes) into their box and place their bottle by the classroom sink.



Uniform expectations

- Clearly label school uniform and shoes please. Blue sweater and white polo shirt with grey tracksuit bottoms/trousers/skirt is accepted as well as school uniform with the school logo.



- A change of clothes clearly labelled in drawstring bag/plastic carrier bag (spare clothes in school- white t-shirt/ tracksuit /socks/underwear bottoms/plimsolls).
- No laces on shoes, no belts on trousers. NO JEWELLERY!
- Wellington boots and a rain coat can be worn to school (if they come into school with wellies they will need to have shoes to change into).
- No PE kit needed in school but they will need to be wearing trainers that have velcro and sports wear on the day.

Uniform provider

Highfield Primary School

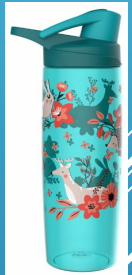


THINGS TO KEEP IN MIND

- A named school book bag - a reading book will come home daily for you to share with your child.
(PLEASE- No rucksacks).



- Labelled water bottle – sports cap (not screw topped).
and a labelled snack for snack time in a box or bag
- Return admission forms emailed as soon as possible.



- £10 contribution or £5.00 per half term (£30 for the year). This is used for sensory or cooking resources.
- Attendance and punctuality

HOW YOU CAN HELP YOUR CHILD BECOME 'SCHOOL READY'...

- Encourage independence e.g. following simple instructions and asking for help etc.
- Self-care e.g. getting dressed, going to the toilet/out of nappies (exceptional cases) and regular hand washing etc.
- Share books and storytelling- use your home language too.
- Getting used to holding a pencil/write their name
- Singing number songs/count to 10 using objects.
- Engage with age appropriate games
- Talk about identity and links (my family conversations).
 - Make your All about Me book to share in school.
 - ***Please use the PACEY leaflet sent in the email.***

USEFUL INFORMATION

- You can contact staff through using the Year Group email address or the office email address. We are no longer able to have an in-depth conversation with parents/carers at the beginning or end of the day without prior arrangement.

reception@highfield-pri.enfield.sch.uk (Reception class staff)


office@highfield-pri.enfield.sch.uk (Office staff)

- School will contact you via ScholarPack app, text or email
- Whatsapp class group chat



- Breakfast club/Tea time club
- BREAKFASTCLUB@HIGHFIELD-PRI.ENFIELD.SCH.UK
- Please ensure that you check your letter with all information including am/pm session, home visit (only those that did not attend our school nursery, taster session and shorter session).
- It is important that your child takes part in all aspects of the induction. Any problems please inform me as soon as you have received your email.

Reminder!

- Please ensure that only one or two adults attends the stay and play taster session (we cannot have extended family in too).
 - If there will be different adults dropping off or collecting your child from school. Please send a photograph of them alongside their name and relationship to your child through using the Year group email address (Do not forget to state which class they are in- either RJ, RL or RF). Complete the form sent to you that requests this information too.
- 

THE EARLY YEARS CURRICULUM: THE 3 PRIME AREAS OF THE CURRICULUM

The Foundation Stage is split into 3 prime areas of learning and 4 Specific areas:

Communication and Language

- Listening, Attention & Understanding
- Speaking



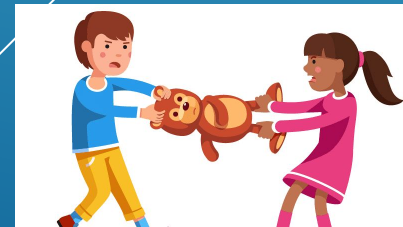
Physical Development

- Gross Motor Skills
- Fine Motor Skills



Personal, Social and Emotional Development

- Self-Regulation
- Managing Self
- Building Relationships



THE 4 SPECIFIC AREAS OF THE CURRICULUM

Literacy

- Comprehension
- Word Reading
- Writing



Mathematics

- Number
- Numerical Patterns



Understanding the World

- Past & Present
- People, Culture & Communities
- The Natural World




Expressive Arts and Design

- Creating with Materials
- Being Imaginative and Expressive



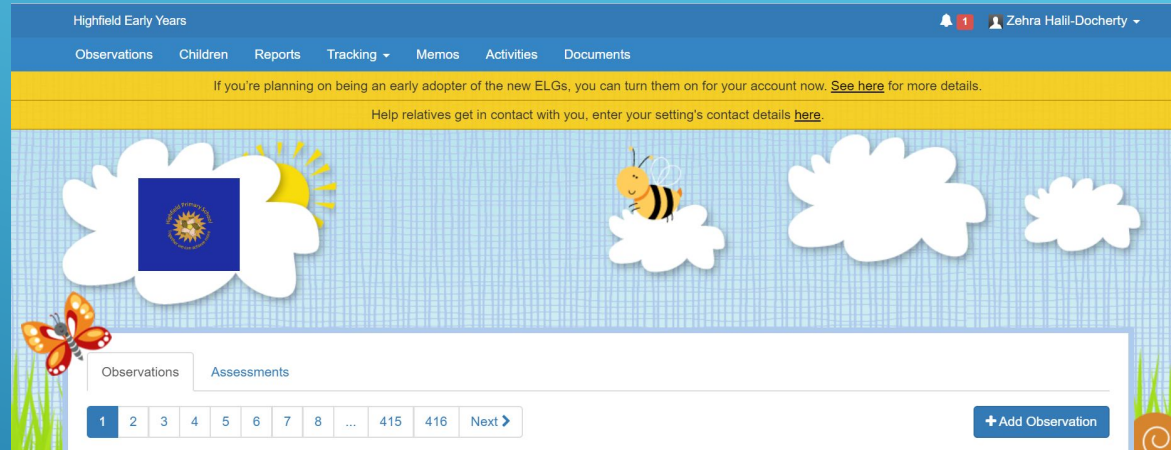
Assessment in Reception

- **RBA**- Baseline Assessment - like a game based programme for the government.
 - **School Baseline Assessment**- observation based
 - **EYFS Profile**- End of year assessment
- 
- A series of white diagonal lines of varying lengths and thicknesses, located in the bottom right corner of the slide.

TAPESTRY



- ▶ We use Tapestry – an online Learning Journal system.



- ▶ Please ensure you read through the Tapestry information.
- ▶ In the Autumn term you will be sent a link to activate your Tapestry account. It is very important that you all do **activate /create your password** to your account as this is where you will access home learning, as you will be expected to share a minimum of 1 home experience per week. You will also access your child's learning journal from any mobile device to comment on the lovely observations. A crib sheet will be shared with you in the Autumn term.
- ▶ Misuse- please do not use this as a platform to contact the staff about things that can be discussed face to face, via email or telephone call e.g. when children will need to wear their P.E. kits to school, what snack they ate or debate about the observation. All notes like these will be removed. It is your child's learning journal and not to be misused.
- ▶ Expectations from school- 1 to 2 pieces of evidence per week (can be whole class, group or individual).

‘Together we can achieve more’

A partnership approach

Respect – Cooperation – Kindness

Our Core Values

We look forward to working with you!

Highfield Reception Team

We have a fantastic group of parents that run our
Friends of Highfield. Please do join!

Friends of Highfield.

friendsofhighfield@hotmail.co.uk

**You are all welcome to the Summer Fete on
Saturday 2nd July**

OFSTED, April 2022

- Pupils really enjoy attending school. This is because teachers make learning interesting and relevant. Pupils arrive each morning ready to learn. The school's three core values of cooperation, kindness and respect are embodied in how pupils conduct themselves around the school.
- Leaders and governors are highly ambitious for all pupils. Pupils, including those with special educational needs and/or disabilities (SEND), achieve exceptionally well. They enjoy caring relationships with each other. Many parents and carers described the school as 'supportive', 'nurturing' and as having 'high expectations of all'.
- The school's curriculum, including in early years, has been carefully crafted by knowledgeable subject leaders. Pupils study a broad range of subjects. Teachers' planning ensures that pupils develop and deepen their understanding of key concepts at every stage. For example, in early years, children learn to match objects with numbers, create patterns and compare different amounts and sizes. By Year 6, pupils tackle challenging multi-step mathematical problems with confidence. Leaders plan the curriculum so that pupils apply their knowledge regularly, including in other subjects. For example, pupils confidently use their mathematical knowledge to draw graphs in geography and history.

grazie 谢谢 ขอบคุณ
merci Σας ευχαριστώ tákk bedankt
Спасибо धन्यवाद ありがとう
tack terima kasih
gracias **thank you** obrigado
teşekkür ederim شکرا 고마워요
danke kiitos köszönjük

*We look forward to
meeting you and
working with your
lovely children!*

