

Lesson 3

L.O: I am learning to find the mean average (1)

On a piece of paper...

Divide the numbers below by 12.

60

288

108

180

6,000

1,200

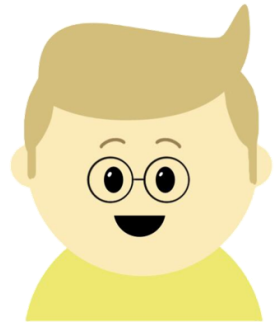
6,048

3,672

9,828

We can use a variety of methods to divide numbers...

Which methods
did you use to
complete the
division task?



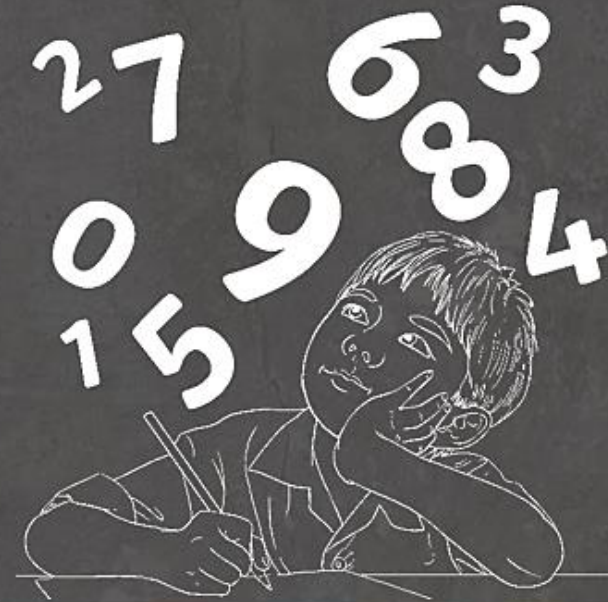
The Mean

What Is the Mean?

The mean is a way of calculating the average of a set of numbers.

An average is a single value that represents a set of values.

It is useful to find an average because it can summarise a larger set of data into a single value that is typical for that data set.



The Mean

What Is the Mean?

For example, in a class of 35 children, there will be a range of different shoe sizes. Finding the average shoe size sums up the data set of 35 shoe sizes as one shoe size that is typical for that class.

There are different ways of finding an average value of a set of data.

The **mean** is one of the ways of calculating an average value of a set of numerical data.

Numerical data is information that is presented as numbers.





Mean

The mean is the average or norm.

Add up all of the values to find a total.

Divide the total by the number of values you added together.

$$2 + 2 + 5 + 6 + 7 + 8 = 30$$

$$30 \div 6 = 5$$

The mean number is

5


www.twinkl.co.uk

Calculating the mean

Lets try this out!

Find the mean average of the data below.

The total has already been found for you.

Day	Ice Creams Sold
Friday	7
Saturday	15
Sunday	5
TOTAL	27

Mean

The mean is the average
or norm.

Add up all of the values
to find a total.

Divide the total by the number of
values you added together.

$$2 + 2 + 5 + 6 + 7 + 8 = 30$$

$$30 \div 6 = 5$$

The mean number is

5


www.twinkl.co.uk

Calculating the mean

Lets try this out!

Find the mean average of the data
below.

$$27 \div 3 = 9$$

Day	Ice Creams Sold
Friday	7
Saturday	15
Sunday	5
TOTAL	27



Finding the mean average

Mean

The mean is the average or norm.

Add up all of the values to find a total.

Divide the total by the number of values you added together.

$$2 + 2 + 5 + 6 + 7 + 8 = 30$$

$$30 \div 6 = 5$$

The mean number is

5



www.twinkl.com

What is the mean of the numbers below?

$$\underline{\quad} \div \underline{\quad} = \underline{\quad}$$



ANSWERS: Finding the mean average

What is the mean of the numbers below?

$$\underline{\quad} \div \underline{\quad} = \underline{\quad}$$

6

4

8

10

7

$$6 + 4 + 8 + 10 + 7 = 35$$

$$35 \div 5 = 7$$

The mean average is 7

Mean

The mean is the average or norm.

Add up all of the values to find a total.

Divide the total by the number of values you added together.

$$2 + 2 + 5 + 6 + 7 + 8 = 30$$

$$30 \div 6 = 5$$

The mean number is

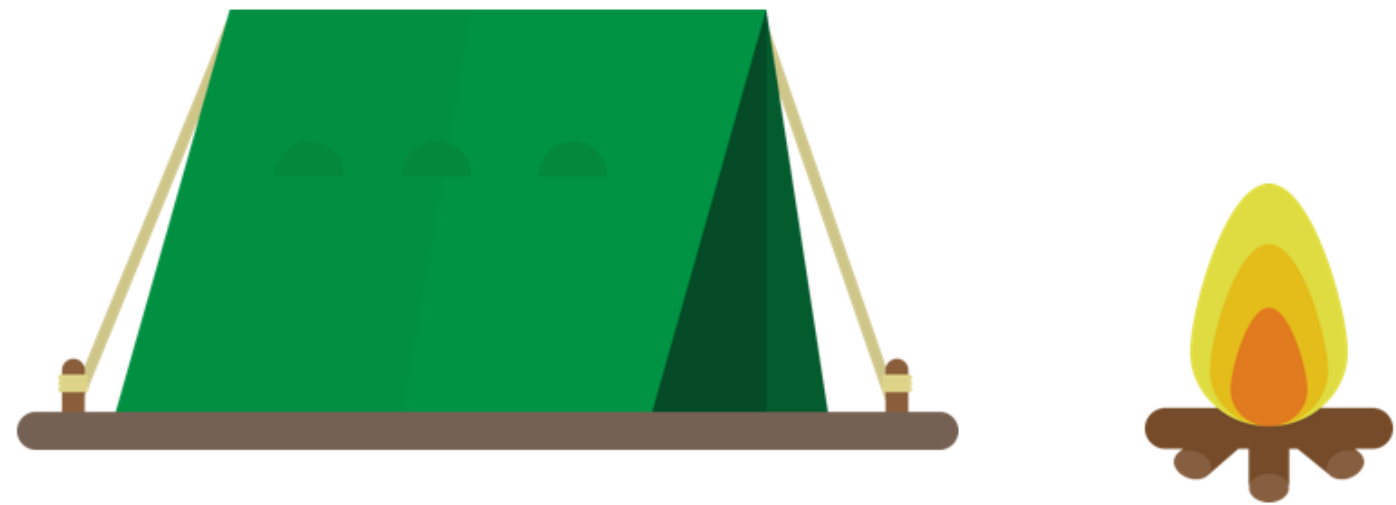
5

twinkl
www.twinkl.com



Finding the Mean

Last year, Alfie went camping 12 times, Darcey went 9 times and Jerry and Asha took 11 camping trips between them.



What is the mean number of camping trips per child?

ANSWERS: Finding the Mean

Last year, Alfie went camping 12 times, Darcey went 9 times and Jerry and Asha took 11 camping trips between them.

$$12 + 9 + 11 = 22$$



$$32 \div 4 = 8$$

The mean
average is 8

What is the mean number of camping trips per child?



How would you work this out?

A toy shop's monthly teddy bear sales are shown below...

Jan	14
Feb	28
Mar	11
Apr	15
May	9
Jun	



Jul	12
Aug	7
Sep	8
Oct	9
Nov	22
Dec	37

If the mean number of teddies sold each month was 15,
how many bears were sold in June?

ANSWERS: Step 1

Lets start by multiplying the mean average by the number of months.

$$15 \times 12 = 180$$

A toy shop's monthly teddy bear sales are shown below...

Jan	14
Feb	28
Mar	11
Apr	15
May	9
Jun	



Jul	12
Aug	7
Sep	8
Oct	9
Nov	22
Dec	37

If the mean number of teddies sold each month was 15, how many bears were sold in June?

ANSWERS: Step 2

Now, find the difference between the product and the total so far... $180 - 172 = 8$
8 teddies were sold in June!

Product: $15 \times 12 = 180$

Total: $14 + 28 + 11 + 15 + 9 + 12 + 7 + 8 + 8 + 9 + 22 + 37 = 172$

A toy shop's monthly teddy bear sales are shown below...

Jan	14
Feb	28
Mar	11
Apr	15
May	9
Jun	



Jul	12
Aug	7
Sep	8
Oct	9
Nov	22
Dec	37

If the mean number of teddies sold each month was 15, how many bears were sold in June?

Mean

The mean is the average
or norm.

Add up all of the values
to find a total.

Divide the total by the number of
values you added together.

$$2 + 2 + 5 + 6 + 7 + 8 = 30$$

$$30 \div 6 = 5$$


The mean number is

5

The Mean



Once you have finished turn this assignment in on Google Classroom.



Task

All	All of you must complete the fluency section.
Most	Most of you will complete the fluency and reasoning sections.
Some	Some of you will complete the fluency, reasoning, and problem-solving sections.

Try your best – it is all we can ask for! 😊

This video may help if you are stuck at any point:

<https://www.youtube.com/watch?v=x8oPXlrLMc0>

Week 2_Maths_Lesson 3

Lesson 3




L.O: I am learning to find the mean average (I).

All	All of you must complete the fluency section.
Most	Most of you will complete the fluency and reasoning sections.
Some	Some of you will complete the fluency, reasoning, and problem-solving sections.

Try your best – it is all we can ask for! 😊

This video may help if you are stuck at any point:
<https://www.youtube.com/watch?v=x8oPXlrLMc0>

Fluency

Key vocabulary: Mean, Average, Total, Product	Your answer								
<p>Complete the stem sentence...</p> <p>To calculate the mean average, we _____ the _____ by the number of _____.</p> <p>Jane, Caleb and Aisha ate some apples.</p>  <p>Total number of apples = _____ Number of children = _____ _____ ÷ _____ = _____</p> <p>The mean number of apples eaten is _____.</p> <p>After school, Jerry read 15 pages of his reading book, Dorcey read 14, Alie read 8 and Mille read 11.</p> <p>What is the mean number of pages they read?</p> 									
<p>Ranjil went running over the bank holiday weekend.</p>  <table border="1"> <thead> <tr> <th>Day</th> <th>Distance</th> </tr> </thead> <tbody> <tr> <td>Saturday</td> <td>7</td> </tr> <tr> <td>Sunday</td> <td>_____</td> </tr> <tr> <td>Monday</td> <td>11</td> </tr> </tbody> </table> <p>If his mean running distance is 8km, how many km did he run on Sunday?</p>	Day	Distance	Saturday	7	Sunday	_____	Monday	11	
Day	Distance								
Saturday	7								
Sunday	_____								
Monday	11								

Week 2_Maths_Lesson 3


5a. Calculate the mean of these numbers.

7.3	12
13.4	8
6	25.3

7a. True or false? The mean of these numbers is 16.

12.4	17	13.1
16.3	18.2	19

10b. Calculate the mean of these coins.



11a. True or false? The mean of these numbers is $108\frac{1}{4}$.

124	272	14.7
37.3	123	60.5