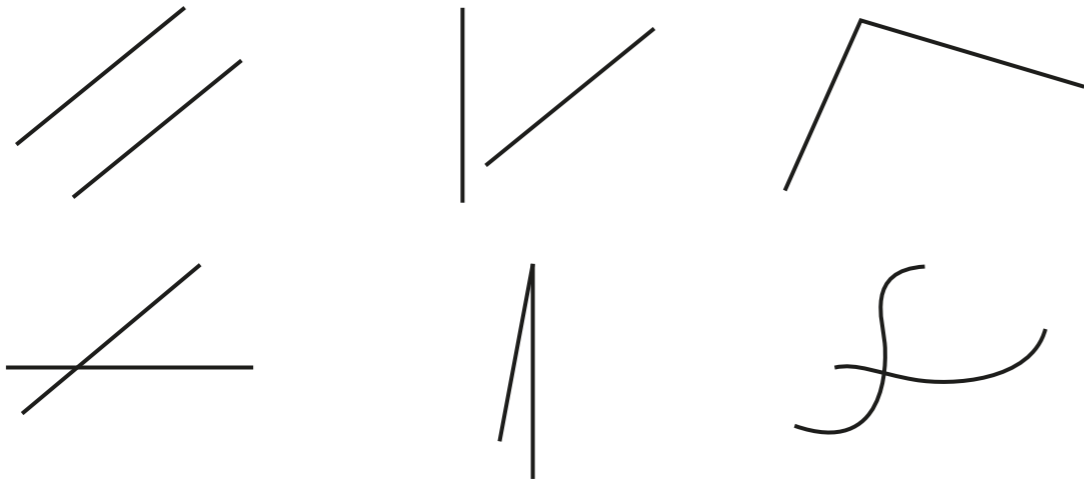


Turns and angles

1 Which pictures show at least one angle? Tick your answers.

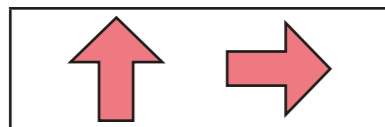


Compare answers with a partner.

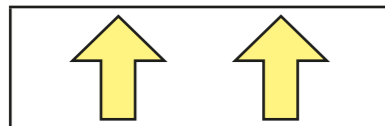


2 The arrows are being turned clockwise.

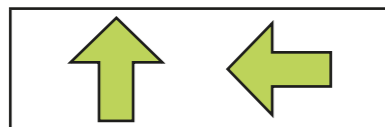
Match the picture to the turn.



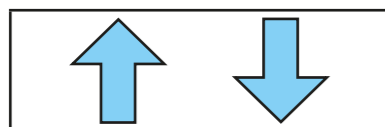
half turn



quarter turn

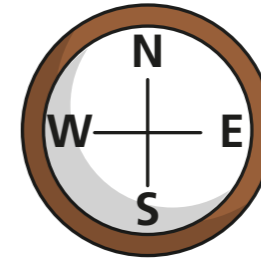


full turn



three-quarter turn

3 Here is a compass.



a) Aisha is facing north.

She turns a quarter turn clockwise.

What direction is she facing now? _____

b) Tommy is facing north.

He turns a quarter turn anticlockwise.

What direction is he facing now? _____

c) Annie is facing east.

She turns a three-quarter turn clockwise.

What direction is she facing now? _____

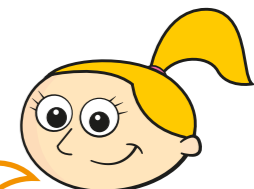
4 Mo and Eva are answering a question.

Mr Lee is facing west. He turns a half turn.
What direction is he facing now?



Mo

I cannot answer this because we don't know what direction he turns in.



Eva

It does not matter about the direction!

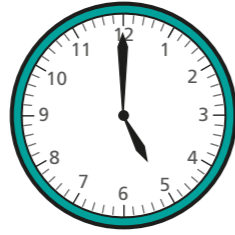
Who do you agree with? _____

Talk about it with a partner.



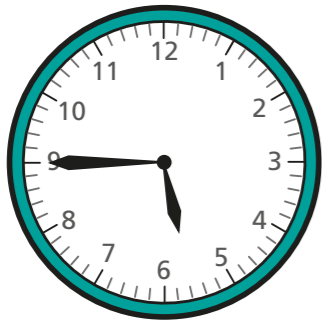
- 5 Esther and Brett are showing what time it will be in a quarter of an hour.

Here is the time now.

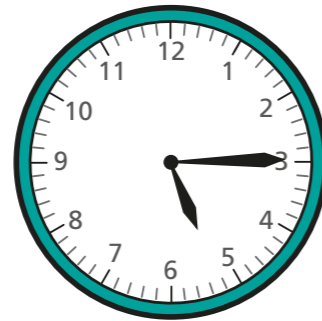


Here are their answers.

Esther



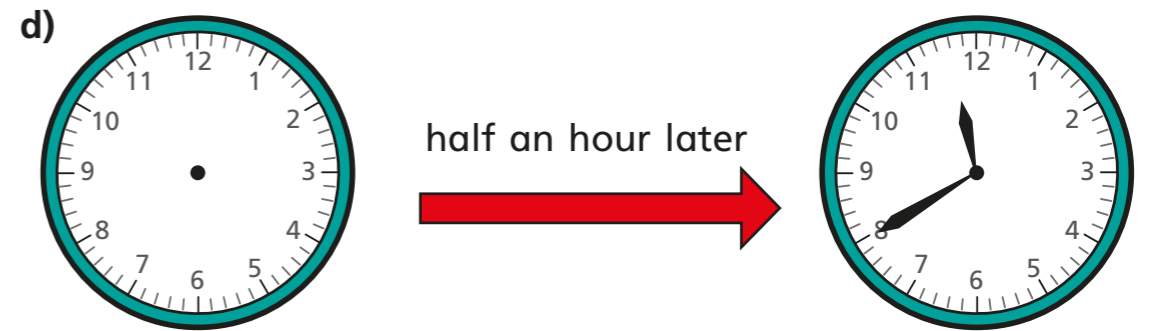
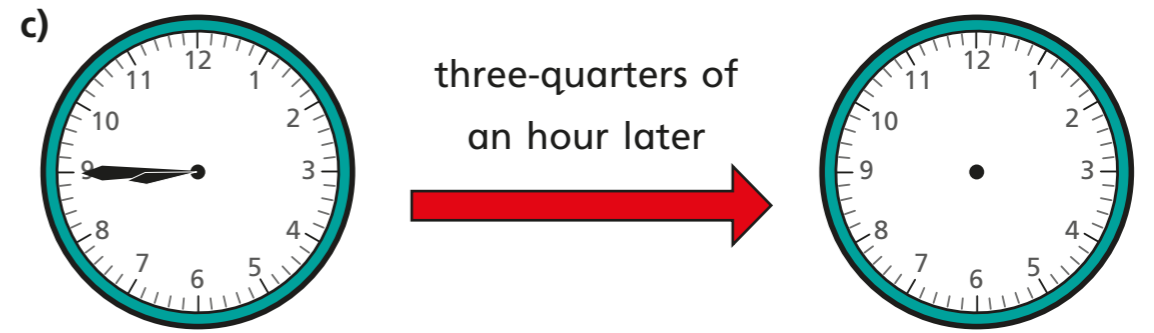
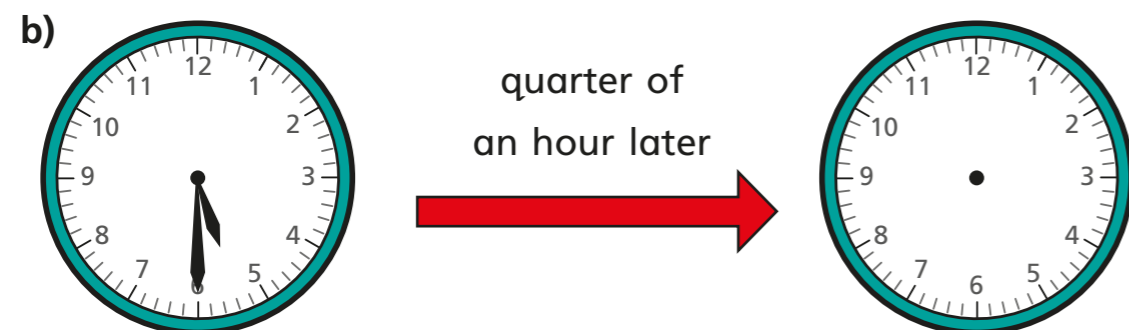
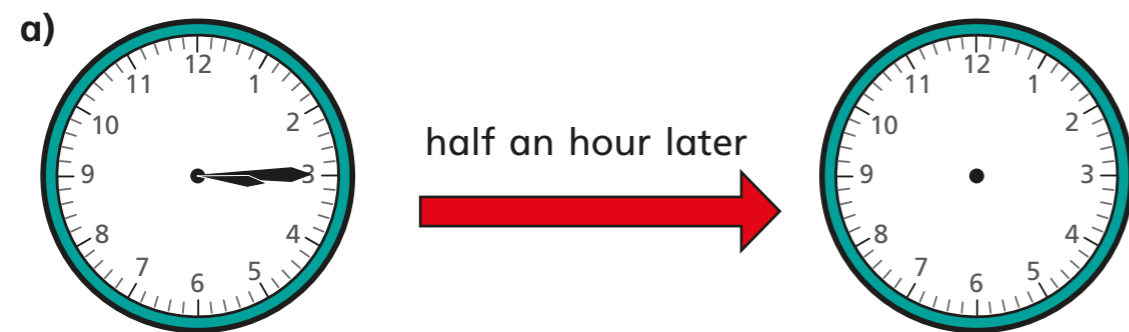
Brett



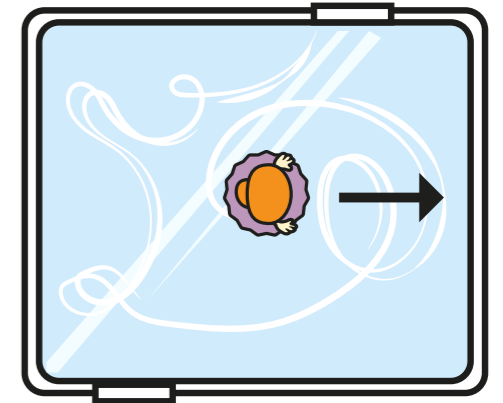
Who is correct?

Talk about it with a partner.

- 6 Draw hands on the clocks to show the new times.



- 7 A figure skater is facing the direction shown. She turns a quarter turn clockwise and then a three-quarter turn clockwise.



- a) Draw on the picture to show that she ends up facing the same way as she started.
- b) What other turns could she make and still end up facing the same way?

Compare answers with a partner.