

20.04.20

L.O. I am learning to measure
and order weights (g/kg).

20.04.20 Mental Maths



You can work these out in your head or write them down if it helps.

Ten more

.....

Write the number which
is 10 more than:

1. $28 = 38$

2. $64 = 74$

3. $38 = 48$

4. $89 = 99$

5. $91 = 101$

Write the number which
is 10 less than:

6. $10 = 0$

7. $32 = 22$

8. $57 = 47$

9. $76 = 66$

10. $105 = 95$

Example:



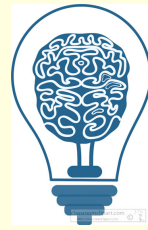
	<u>Weight prediction</u>	<u>Result</u>
	<i>Lightest</i>	<i>Lightest</i>
1.	Crisps	Crisps = 37g
2.	Cereal	Carrots = 200g
3.	Bread	Pasta = 500g
4.	Carrots	Apples = 680g
5.	Pasta	Cereal = 750g
6.	Apples	Bread = 800g
	<i>Heaviest</i>	<i>Heaviest</i>

Your predicting and checking your own answers today. Ask a sibling or adult to help you check what you have weighed/ordered.

21.04.20

L.O. I am learning to compare
and convert weights (g/kg).

21.04.20 Mental Maths



You can work these out in your head or write them down if it helps.

Large and small

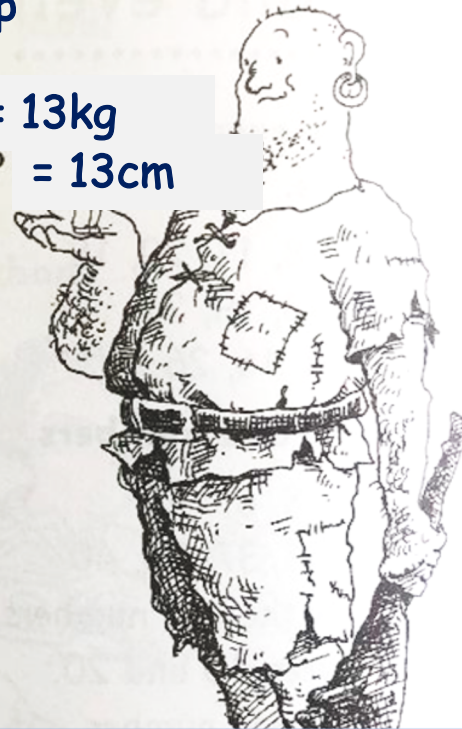
1. Which is less, 23p or 25p? = **23p**
2. Which is more, 45 or 54? = **54**
3. Which is heavier, 13 kg or 3 kg? = **13kg**
4. Which is shorter, 30 cm or 13 cm? = **13cm**

Write the smallest number.

5. 12, 21, **2**, 20
6. 30, 50, **20**, 60
7. 34, 43, **23**, 32

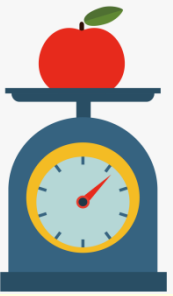
Write the largest number.

8. 89, **95**, 48, 79
9. 29, 57, 12, **86**
10. 11, 1, 21, **71**



21.04.20

L.O. I am learning to compare and convert weights (g/kg).



1 kilogram (kg) = 1000 grams (g)

Convert these mixed weights into grams (g):

Example: 1kg 200g = 1200g

1. 1kg = **1000g**
2. 1kg 500g = **1500g**
3. 1kg 650g = **1650g**
4. 1kg 320g = **1320g**
5. 1kg 910g = **1910g**
6. 2kg 100g = **2100g**
7. 2kg 435g = **2435g**
8. 3kg 801g = **3801g**

Convert these mixed weights into grams (g):

Example: 1kg 200g = 1200g

1. 1kg 400g = **1400g**
2. 1kg 950g = **1950g**
3. 1kg 130g = **1130g**
4. 2kg 320g = **2320g**
5. 2kg 910g = **2910g**
6. 3kg 100g = **3100g**
7. 4kg 405g = **4405g**
8. 5kg 801g = **5801g**

Convert these mixed weights into grams (g):

Example: 1kg 200g = 1200g

1. 1kg 140g = **1140g**
2. 1kg 015g = **1015g**
3. 1kg 131g = **1131g**
4. 2kg 020g = **2020g**
5. 5kg 101g = **5101g**
6. 3kg 102g = **3102g**
7. 4kg 5g = **4005g**
8. 10kg 80g = **10,080g**

22.04.20

L.O. I am learning to add
weights (g/kg).

22.04.20 Mental Maths



You can work these out in your head or write them down if it helps.

In between
.....

Write a number in the box so that the three numbers are in order.

1. 27 31 = 28, 29, 30
2. 18 25 = 19, 20, 21, 22, 23, 24
3. 54 60 = 55, 56, 57, 58, 59
4. 75 81 = 76, 77, 78, 79, 80
5. 89 92 = 90, 91

Write the number half way between:

6. 7 and 11 = 9
7. 20 and 30 = 25
8. 44 and 50 = 47
9. 90p and £1 = 95p
10. 50 cm and 60 cm = 55cm

22.04.20

L.O. I am learning to add weights (g/kg).

No carrying:

1. $350\text{g} + 245\text{g} = 595\text{g}$

2. $310\text{g} + 412\text{g} = 722\text{g}$

3. $536\text{g} + 110\text{g} = 646\text{g}$

4. $140\text{g} + 159\text{g} = 299\text{g}$

5. $257\text{g} + 341\text{g} = 598\text{g}$

6. $369\text{g} + 620\text{g} = 989\text{g}$

7. $168\text{g} + 20\text{g} = 188\text{g}$

8. $54\text{g} + 140\text{g} = 194\text{g}$

Carrying once:

1. $458\text{g} + 345\text{g} = 803\text{g}$

2. $219\text{g} + 372\text{g} = 591\text{g}$

3. $539\text{g} + 211\text{g} = 750\text{g}$

4. $143\text{g} + 339\text{g} = 482\text{g}$

5. $257\text{g} + 515\text{g} = 772\text{g}$

6. $369\text{g} + 129\text{g} = 498\text{g}$

7. $1268\text{g} + 325\text{g} = 1593\text{g}$

8. $2554\text{g} + 146\text{g} = 2700\text{g}$

Carrying once/twice:

1. $350\text{g} + 495\text{g} = 845\text{g}$

2. $547\text{g} + 382\text{g} = 929\text{g}$

3. $476\text{g} + 366\text{g} = 842\text{g}$

4. $1381\text{g} + 159\text{g} = 1540\text{g}$

5. $2057\text{g} + 358\text{g} = 2415\text{g}$

6. $2\text{kg } 369\text{g} + 680\text{g} = 3049\text{g}$

7. $1\text{kg } 278\text{g} + 299\text{g} = 1577\text{g}$

8. $3\text{kg } 554\text{g} + 680\text{g} = 4234\text{g}$

23.04.20

L.O. I am learning to subtract
weights (g/kg).

23.04.20 Mental Maths



You can work these out in your head or write them down if it helps.

Ordering numbers

.....

Put these in order, the largest first.

1. 29, 16, 57, 83, 47
2. 35p, 20p, 50p, 45p
3. 19 cm, 21 cm, 91 cm, 9 cm

Put these in order, the smallest first.

4. 31p, 13p, 11p, 23p
5. 68, 96, 49, 78, 57
6. 35 kg, 67 kg, 25 kg, 68 kg

Write numbers in the boxes so that the 5 numbers are in order.

7. 23 28 35
8. 54 60 69
9. 78 82 86
10. 90 92 100



- 7.
- 8.
- 9.
- 10.

Any number in the box that is between the given numbers.

1. 83, 57, 47, 29, 16
2. 50p, 45p, 35p, 20p
3. 91cm, 21cm, 19cm, 9cm
4. 11p, 13p, 23p, 31p
5. 49, 57, 68, 78, 96
6. 25kg, 35kg, 67kg, 68kg

23.04.20

L.O. I am learning to subtract weights (g/kg).

No exchanging:

1. $355\text{g} - 240\text{g} = 115\text{g}$

2. $416\text{g} - 212\text{g} = 204\text{g}$

3. $536\text{g} - 110\text{g} = 426\text{g}$

4. $189\text{g} - 159\text{g} = 30\text{g}$

5. $457\text{g} - 341\text{g} = 116\text{g}$

6. $369\text{g} - 120\text{g} = 249\text{g}$

7. $168\text{g} - 20\text{g} = 148\text{g}$

8. $254\text{g} - 40\text{g} = 214\text{g}$

Exchanging in the tens:

1. $475\text{g} - 348\text{g} = 127\text{g}$

2. $492\text{g} - 379\text{g} = 113\text{g}$

3. $533\text{g} - 215\text{g} = 318\text{g}$

4. $363\text{g} - 139\text{g} = 224\text{g}$

5. $452\text{g} - 215\text{g} = 237\text{g}$

6. $368\text{g} - 129\text{g} = 239\text{g}$

7. $1761\text{g} - 325\text{g} = 1436\text{g}$

8. $2554\text{g} - 146\text{g} = 2408\text{g}$

Exchanging in the hundreds:

1. $658\text{g} - 495\text{g} = 163\text{g}$

2. $547\text{g} - 382\text{g} = 165\text{g}$

3. $736\text{g} - 366\text{g} = 370\text{g}$

4. $1318\text{g} - 157\text{g} = 1161\text{g}$

5. $2459\text{g} - 364\text{g} = 2095\text{g}$

6. $2\text{kg } 969\text{g} - 680\text{g} = 2289\text{g}$

7. $1\text{kg } 278\text{g} - 279\text{g} = 999\text{g}$

8. $3\text{kg } 554\text{g} - 680\text{g} = 2874\text{g}$

24.04.20

L.O. I am learning to solve
weight challenges.

24.04.20

End of week quiz!



CHECK UP 1

Write the number which is:

1. 10 more than 56 = 66
2. 1 less than 90 = 89
3. 2 more than 68 = 70
4. 3 tens more than 60 = 90
5. 1 more than 99 = 100
6. Which is more, 65p or 56p? = 65p
7. Which is shorter, 1 cm or 100 cm? = 1cm
8. 37 is an even number. True or false? = False
9. Write the odd numbers between 20 and 30.
10. Write the even numbers between 85 and 95.

9. 21, 23, 25, 27, 29

10. 86, 88, 90, 92, 94

What comes next?

11. 10, 8, 6, 4, ,
12. 93, 95, 97, ,
13. 57, 55, 53, ,

Put these in order, the smallest first.

14. 17, 12, 15, 19, 11 = 11, 12, 15, 17, 19
15. 12, 20, 2, 22, 21 = 2, 12, 20, 21, 22

Write true or false for each sentence.

16. 19 is between 20 and 25 = False
17. 31 is between 28 and 35 = True
18. 45 is halfway between 40 and 50 = True
19. 38 is 10 more than 28 = True
20. 43 is 10 less than 33 = False

24.04.20

L.O. I am learning to solve weight challenges.



One Laffy Taffy bar weighs 13g.

Laffy Taffy's are delivered in boxes. I can fit 5 bars in one box. How much will one box weigh?

$$\begin{array}{r} 13 \\ 13 \\ 13 \\ 13 \\ 13 \\ + 13 \\ \hline 65 \text{ g} \end{array}$$

OR $13 \times 5 = 65\text{g}$

Laffy Taffy's are delivered in boxes. I can fit 8 bars in one box. How much will one box weigh?

$$\begin{array}{r} 13 \\ 13 \\ 13 \\ 13 \\ 13 \\ 13 \\ 13 \\ + 13 \\ \hline 104 \text{ g} \end{array}$$

OR $13 \times 8 = 104\text{g}$

Laffy Taffy's are delivered in boxes. I can fit 12 bars in one box. How much will one box weigh?

$$\begin{array}{r} 13 \\ 13 \\ 13 \\ 13 \\ 13 \\ 13 \\ 13 \\ 13 \\ 13 \\ 13 \\ + 13 \\ \hline 156 \text{ g} \end{array}$$

OR $13 \times 12 = 156\text{g}$

24.04.20

L.O. I am learning to solve weight challenges.



A box of **Rainbow Nerds** weighs 425g.
In each pack, each colour weighs:

Yellow = 150g

Green = 74g

Pink = 85g

Purple = 61g

I want to make two boxes of **Rainbow Nerds** to give to my brother. How many of each colour nerd do I need?

Yellow = 300g

Green = 148g

Pink = 170g

Purple = 122g

Red nerds have not been included above. How much do the red nerds weigh in each box?

$$150\text{g} + 74\text{g} + 85\text{g} + 61\text{g} = 370\text{g}$$

$$425\text{g} - 370\text{g} = 55\text{g}$$

Red = 55g

Rainbow Nerds boxes are delivered in groups of 4. How many of each colour nerd do I need to fill 4 boxes for delivery?

Yellow = 600g

Green = 296g

Pink = 340g

Purple = 244g

Red = 220g

24.04.20

L.O. I am learning to solve weight challenges.



The total weight of a box of **Wonka Observatory Collection Truffles** is **350g**.

Each box contains 12 truffles.

1 truffle = 25g

One box of **Wonka Observatory Collection Truffles** had only **10 truffles** in it. How much did the box weigh?

10 truffles = 250g

How many more truffles do I need to add so the box is full?

2 truffles

How much do 3 boxes of **Wonka Observatory Collection Truffles** weigh?

$$\begin{array}{r} 350\text{g} \\ 350\text{g} \\ + 350\text{g} \\ \hline 1050\text{g} \end{array}$$

How many truffles will I have if I have 3 boxes full?

12 x 3 = 36 truffles

What is the total weight of all 12 truffles?

12 truffles = 300g

What is the weight of the *empty* box?

Empty box = 50g

24.04.20

L.O. I am learning to solve weight challenges.



One box of 12 Everlasting Gobstoppers weighs 170g.
The empty box weighs 14g.

How much do the 12
Everlasting Gobstoppers weigh?

$$170\text{g} - 14\text{g} = 156\text{g}$$

$$12 \text{ gobstoppers} = 156 \text{ g}$$

How much do 3 empty
boxes weigh?

$$14\text{g} \times 3 = 42\text{g}$$

How much do 3 full boxes weigh?

$$170\text{g} \times 3 = 510\text{g}$$

How much do the 12
Everlasting Gobstoppers weigh?

$$170\text{g} - 14\text{g} = 156\text{g}$$

$$12 \text{ gobstoppers} = 156 \text{ g}$$

What is the weight of
half a packet of gobstoppers?

$$\text{Half a box} = 78\text{g}$$

24.04.20

L.O. I am learning to solve weight challenges.



One Wonka Inventing Room Peanut Butter & Jam bar weighs 160g.

The ingredients weigh:

Cocoa = 60g

Peanut Butter = 30g

Jam = 30g

Sugar = 40g

What is the total weight of three bars?

480g

What is the total weight of jam needed for three bars?

90g

What is the total weight of ingredients needed for three bars?

Cocoa = 180g

Peanut Butter = 90g

Jam = 90g

Sugar = 120g

One of my chefs accidentally puts in double the amount of cocoa. How much cocoa did my chef put in?

120g

What is the weight of the bar with double the amount of cocoa?

220g

24.04.20

L.O. I am learning to solve weight challenges.



A small **Golden Chocolate Egg** weighs 100g.

The ingredients weigh:

Cocoa = 50g

Sugar = 30g

Gold Luster = 20g

Willy Wonka wants to make a giant **Golden Chocolate Egg** that is 4 times bigger!

What will the giant **Golden Chocolate Egg** weigh?

400g

Willy Wonka wants to make a giant **Golden Chocolate Egg** that is 6 times bigger! What will the giant **Golden Chocolate Egg** weigh?

What will the ingredients needed weigh?

Cocoa = 300g

Sugar = 180g

Gold Luster = 120g

Willy Wonka wants to make a giant **Golden Chocolate Egg** that is 8 times bigger! What will the giant **Golden Chocolate Egg** weigh?

What will the ingredients needed weigh?

Cocoa = 400g

Sugar = 240g

Gold Luster = 160g